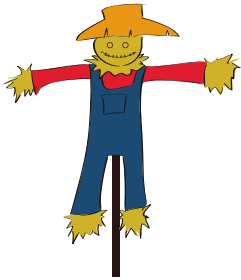
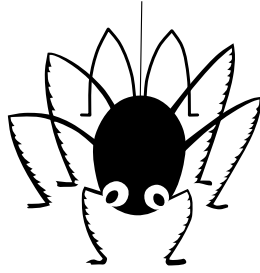


Halloween

Retrouve les lettres manquantes



ÉP_UVENT_IL



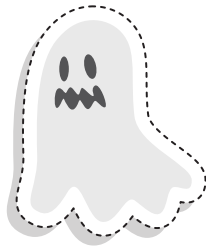
AR_IG_ÉE



CH_T N_IR



S_RCIÈ_E



F_NT_ME



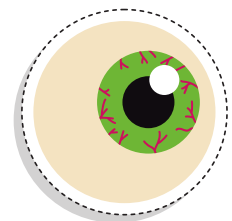
C_TR_UILLE



B_U_IE



M_ISON H_NTÉE



OE_L



CH_UDR_N



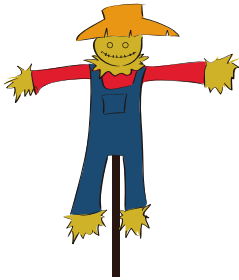
PO_S_N



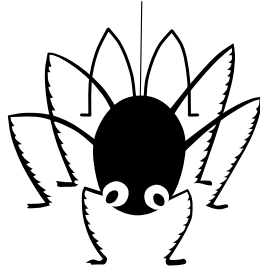
B_NB_NS

Halloween

Retrouve les lettres manquantes



ÉPOUVENTAIL



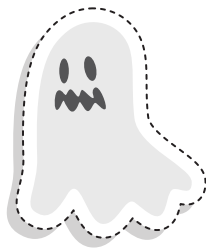
ARAIGNÉE



CHAT NOIR



SORCIÈRE



FANTÔME



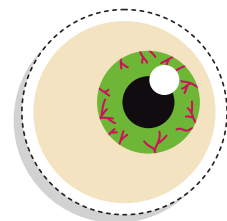
CITROUILLE



BOUGIE



MAISON HANTÉE



OEIL



CHAUDRON



POISON



BONBONS